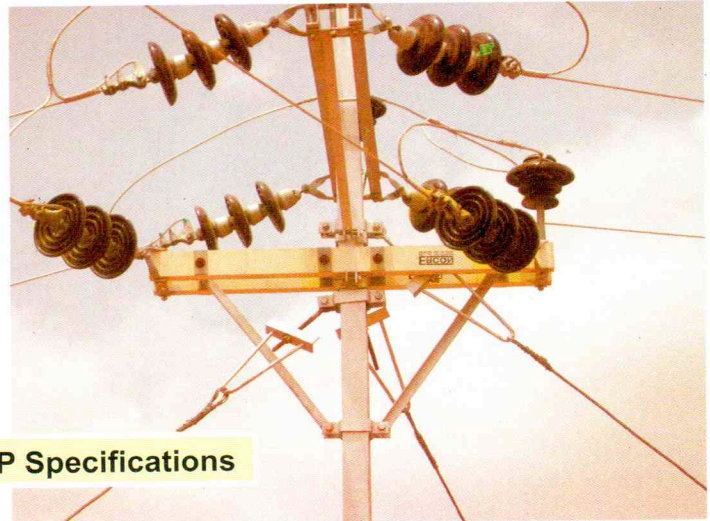


FIBRE GLASS CROSS ARMS



Meets REC & NIPP Specifications

TECHNICAL SPECIFICATIONS

No.	RATING	SECTION	LENGTH	LOADING KG		NO OF HOLES
				VERT	HOR	
1	11 KV	75X45	1150 & 1200	300	100	4
2	33 KV	110X55	1605 & 1650	400	135	4
3	11 KV	75X75	1820	300	100	7
4	33 KV	100X100	2640	400	135	7

- All dimensions are in mm
- Item 1 & 2 Type tested as per **REC Specification** no. 40/1985 Rev 1997 and 42/1985
- Items 3 & 4 meets **NIPP** and **Nigerian Specifications**
- **CROSS ARMS** of other dimensions and as per other countries specifications can also be supplied.

HIGHER VOLTAGE CROSS ARMS CAN ALSO BE SUPPLIED

MODEL NO: AFRP(RATING)(SECTION)
Example: AFRP117545 for Item 1 above

ADVANTAGES OVER STEEL AND WOODEN CROSS ARMS

PROPERTIES	STEEL	WOOD	FIBRE GLASS
INSULATION	GOOD CONDUCTOR	BAD CONDUCTOR	INSULATOR
CORROSION	HIGHLY CORROSIVE	ROTS AND DETERIORATES	NON CORROSIVE
WEIGHT	HEAVY	HEAVY	LIGHT
INSTALLATION	CUMBERSOME	CUMBERSOME	EASY
BIRD FAULT	VERY HIGH	NIL	NIL
WATER ABSORPTION	NIL	HIGH	VERY LOW

**Made From
High Strength
Pultruded Profiles**

No Bird Faults

No Corrosion

U.V. Resistant

ARGOS FRP PTY LTD

WEB SITE : www.argosfrp.com.au

26 HOWE STREET OSBORNE PARK WA 6017 AUSTRALIA
EMAIL: YOKESH@ARGOSFRP.COM.AU | PH: +61 (8) 6363 5894

